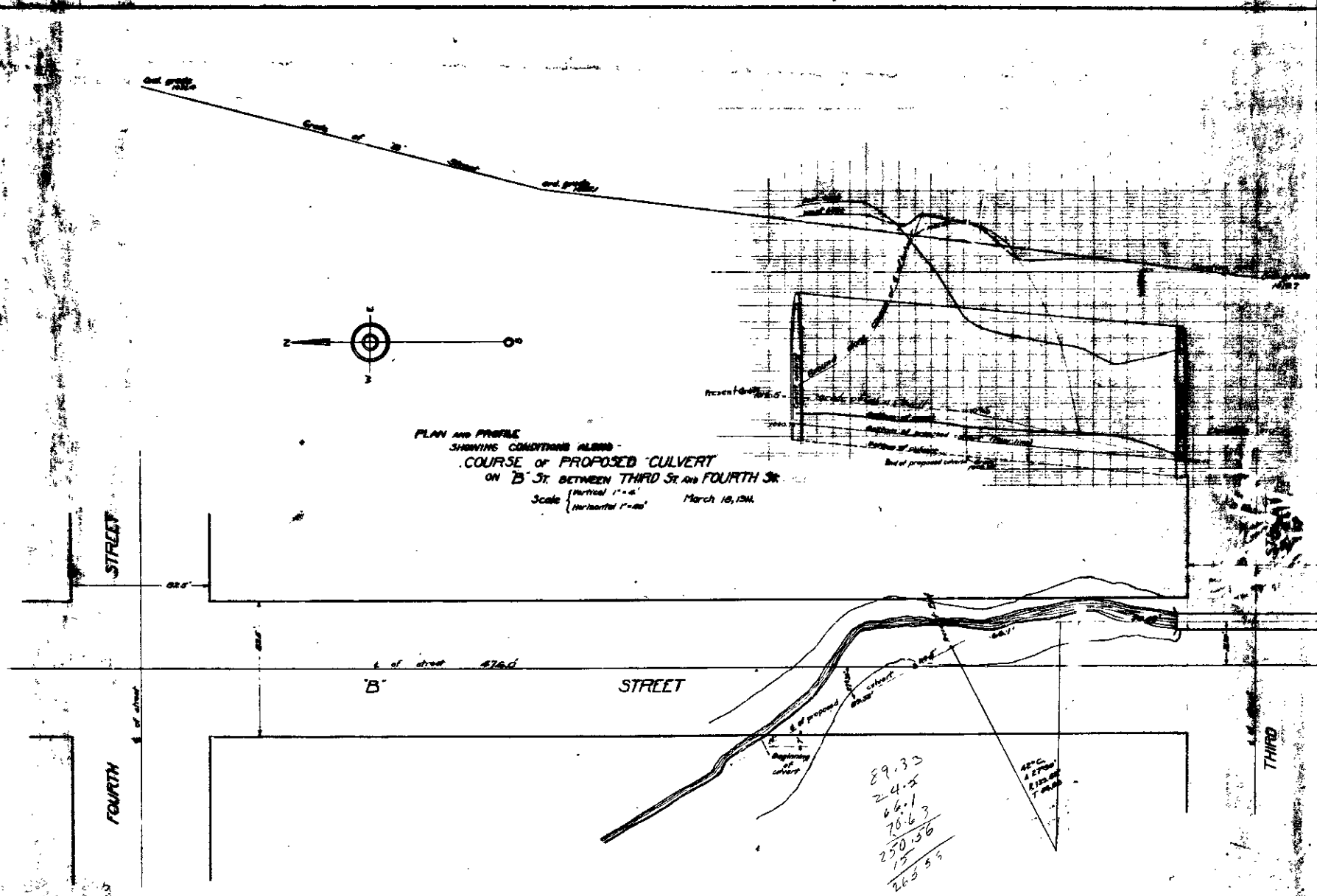


SECTION OF CONCRETE CULVERT
SCALE 1"=2'

- A 2" round steel bars 3' long bent in an arc of radius 6'-12" spaced 12" on centers.
- B 2" round steel bars 2'-6" long spaced 12" on centers, each end bent as shown.
- C Distributing rods 1/2" steel bars spaced 3'-0" on centers.



PLAN AND PROFILE
SHOWING CONDITIONS ALONG
COURSE OF PROPOSED CULVERT
ON B ST BETWEEN THIRD ST AND FOURTH ST
Scale (horizontal 1"=40' vertical 1"=4') March 16, 1924

89.32
24.5
46.1
70.63
250.56
265.55